
VXR System
Veterinary X-Ray System



**NEVER
STOP**

VXR System

Dedicated to your unique veterinary practice.

From facility requirements to workflow to dose reduction and image quality, the VXR system combines a highly efficient design based on feedback from veterinary practices and the leader in image quality.

Ease of use

- 4-way floating tabletop and urine trap ensure efficient exams.
- Bucky accommodates any new or existing, standard sized, 14x17" or 17x17" cassettes or detectors.

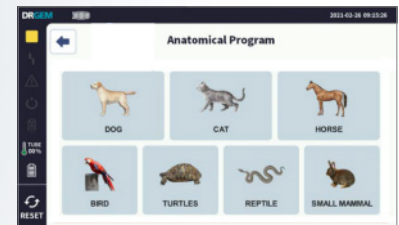
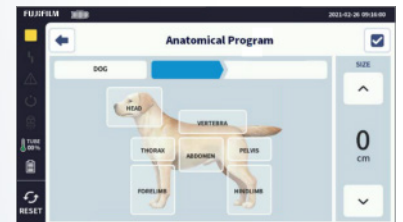
Installs almost anywhere

- 32 kW or capacitor assisted 32 kW generator can be used with standard electrical infrastructure.
- Generator hardware is installed inside the table.



Touchscreen generator controls

- Anatomical selections populate user-programmable techniques.
- Reduce dose with pre-sets customized for Fujifilm's dose efficient technologies.



FDR SE Lite detectors are economical, wireless, and leverage ISS technology with FDR SE Console.



FDR ES detectors accommodate a range of configurations and include ISS technology with FDX Console.

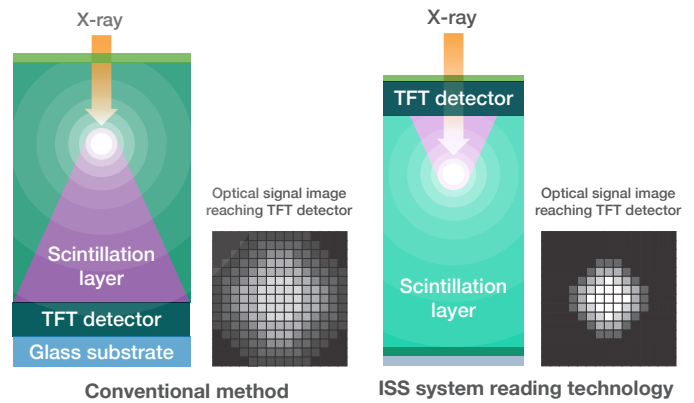


Legacy standard-sized cassettes and detectors are compatible, reserving the option to use what you have.

Low dose, brilliant images

Minimize exposure for a safe imaging environment for patients and technicians.

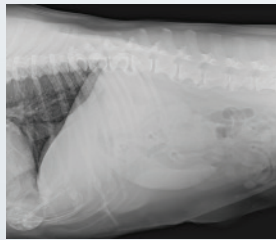
ISS (irradiated side sampling) capture technology from Fujifilm produces sharper images at lower dose compared to traditional designs. This is done by positioning the electronics (TFTs) at the irradiation side, which suppresses scatter and attenuation within the scintillator and improves efficiency.



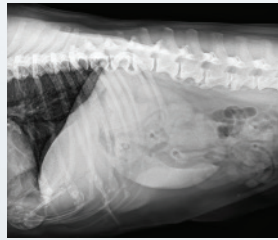
Efficient workflow and high diagnostic value



Virtual Grid achieves up to 50% dose reduction for large animals, compared to exams using a real grid. (option)



No Grid



Virtual Grid



Dynamic Visualization II further improves visibility using intelligent anatomic feature recognition. (option)



Conventional processing



Dynamic Visualization II



VXR SYSTEM SPECIFICATIONS

Radiographic Table

Tabletop: 59"(W) x 28.19"(D) x 1.75"(H)

Longitudinal: 20.86" (±10.43")

Transverse: 4.48" (±2.24")

Removable grid: 10:1, 103 lpi, 100 cm focus

SID: 100 cm (Urine trap included)

Bucky: 17x17" standard

Environmental Conditions

Temperature: 10 °C to 40°C (50 °F to 104 °F)

Humidity: 30% to 75%, non-condensing

Atmospheric pressure: 700 hPa to 1060 hPa

Power Supply

32 kW (220-240 V), capacitor assisted (100-120 V)

Single phase

Max output: 400 mA@80 kV, 320 mA@100 kV,
250 mA@125 kV

Timer: 0.001 to 10 sec., 38 steps

mAs: 0.1 to 320, capacitor assisted 0.1 to 10

Touch Control console on tube head

4-point display (kV, mA, Time, mAs)

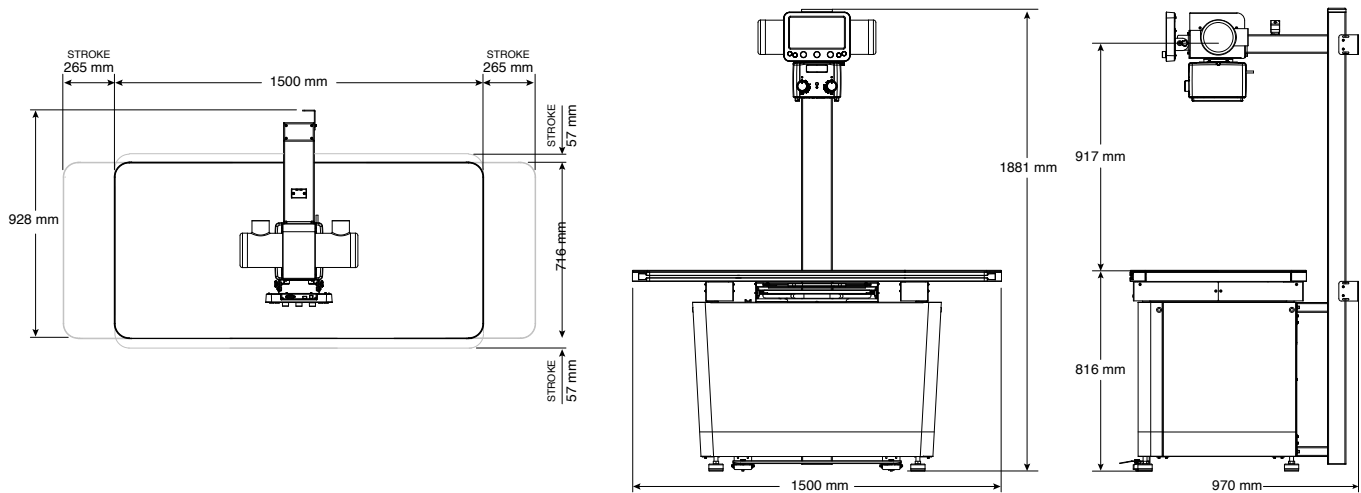
4 m power cable

Tube and Collimator

Focal spot: 1.0/2.0 mm

Heat units: 140 kHU

Collimator: Manual with LED



FUJIFILM Healthcare Americas Corporation

81 Hartwell Avenue, Suite 300, Lexington, MA 02421

fujifilmhealthcare.com

800.431.1850

© FUJIFILM Healthcare Americas Corporation

DOC-0047798-C

FUJIFILM
Value from Innovation